

Wired Remote Start for Honda CO-Minder/Bluetooth EU7000is Installation and User Guide

made by Genconnex®

Features

1) On/Off button

Press in once to the detent position to 'wake up' the generator before starting. Press again to pop out of the detent position to turn off the generator.

Note that when you first press in this button to wake up the generator, the light around the center of the button will not turn on until after you press the starter button and the generator has started. This button will stay lit until the generator is turned off.

Also note to start the generator from the generator, you will need to remove the wire remote plug and push back in the Honda 6 pin connector.



2) Starter Button

Momentarily press then release to start the generator after you have pressed in the On/Off button (detent position). You will know the generator started by seeing the On/Off button light up.

It may take more than one attempt to start the generator depending on fuel type, outside temperature and other factors. If it fails to start, try again in 2-3 seconds for up to 3 times. If it still fails to start make sure the generator switch is on and fuel is available to the generator.

How to install your Wired Remote

Tools needed: pliers and small size flat head screwdriver

Est. time for install: 10 min.

Step 1

Open battery compartment on the front lower left corner when facing generator



**Step 2

Remove existing 6 pin plug located near the top of the compartment. See below for connector details.



Step 3

Insert new wired remote connector into 6 pin white connector with small tab down.



Step 4

Remove cutout from inside cover to route wired remote cable out of compartment



Step 5

Re-install cover over battery compartment with wired start cable access

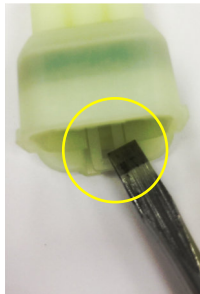
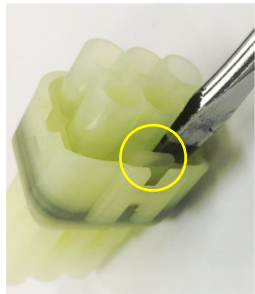


Step 6

Turn and leave key in ON position to enable wired start/stop function



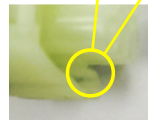
****A note about step 2** the new 6-pin connector Honda uses in their EU7000is can be tricky to disconnect



To disconnect the 6 pin connector from the unit you may need a small flat blade screw driver to release the tab holding it into the unit. The pictures to the left show the tab



Note locking tab on left, and locking pin in right (side view). These features are on the bottom of the connector in the EU7000is



Fully seated with tab locking in pin